

Putzmeister BOOM PUMP ADVANTAGE



Modular Flatpack

Fully removable, Putzmeister's modular bolt-on flatpack and hydraulic system combine versatility and servicing convenience. This simple design allows for cost-effective, minimally labor intensive pump cell replacement for upgrades, repairs or as part of a maintenance program.



Pump from the Boom or Back End

Small in size, but offering powerful versatility, the 20Z-Meter is fitted with a standard swivel elbow off the back end of the model. Featuring a 90-degree pivot, this allows the unit to be attached to delivery line for operation as a City Pump.



RS 905A Hopper

Putzmeister's EZ Clean Out RS 905A hopper is engineered for performance and easy maintenance. Offering 19.4 cu. ft. (550L) capacity, the hopper features hard-faced remixer paddles and vibrator. The splash guard design protects the unit from splattering during pumping and folds down and latches to cover the hopper during transit.

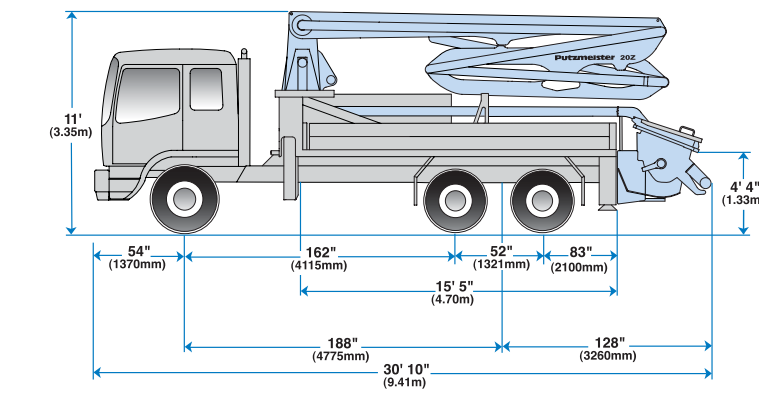
20Z-Meter

Truck-Mounted Concrete Boom Pump

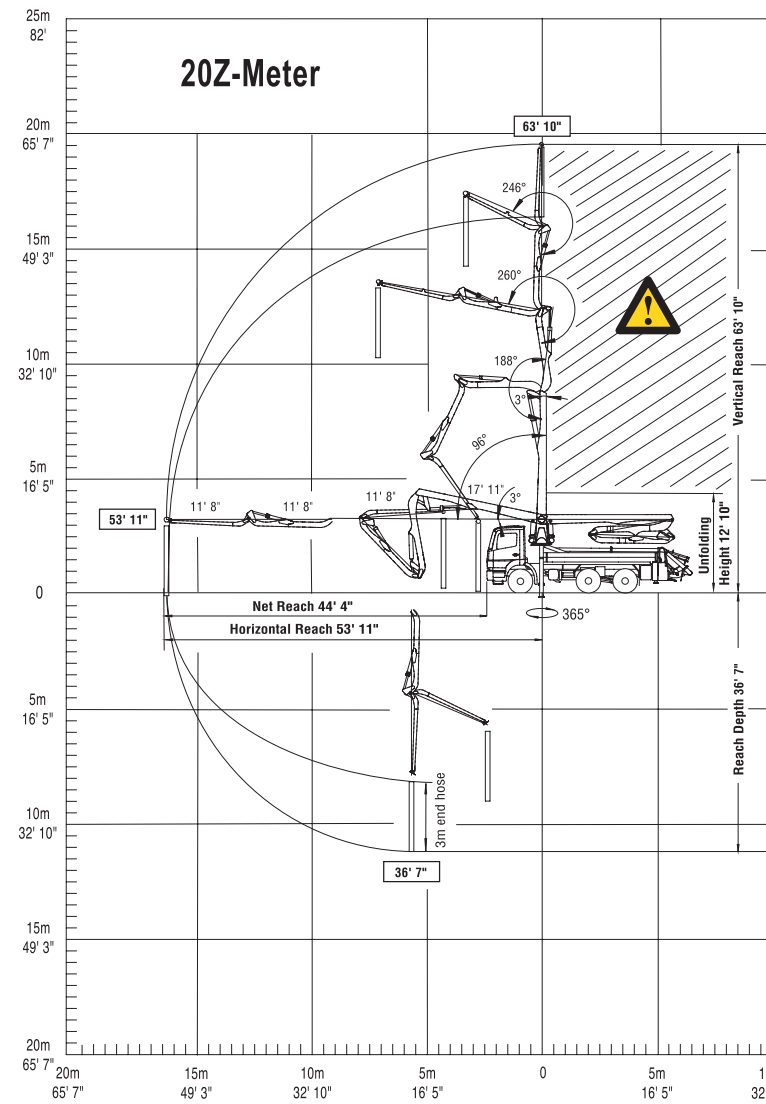


- 63' 10" (19.46m) vertical reach
- Compact model for limited access sites
- Versatile 4-section Z-Fold boom design
- Fold-down side panels for pipe storage

20Z-Meter
20Z-Meter

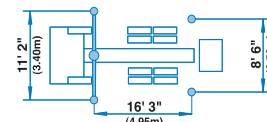


Range Diagram



⚠ End hose not to be operated in caution area.

Photos and drawings are for illustrative purposes only. For available options, please refer to price list.



Authorized Distributor



Putzmeister America, Inc.
1733 90th Street
Sturtevant, WI 53177 USA
Telephone (262) 886-3200
(800) 884-7210
Facsimile (262) 884-6338
www.putzmeister.com



20Z-Meter Truck-Mounted Specifications

Based on Model GMC TT8500 with .09 pump cell

Length	30' 10"	(9.41m)
Width	8' 2"	(2.50m)
Height	11'	(3.35m)
Wheelbase	188"	(4.775m)
Front axle weight	10,120 lbs	(4,590kg)
Rear axle weight	25,620 lbs	(11,621kg)
Approx. total weight	35,740 lbs	(16,211kg)

Weights are approximate and include pump, boom, truck, full hydraulic oil, driver and some fuel. Varies with options selected.

Dimensions will vary with different truck makes, models and specifications.

Boom Specifications • Z-Fold Design

Height & Reach		
Vertical reach	63' 10"	(19.46m)
Horizontal reach	53' 11"	(16.43m)
Reach from front of truck*	44' 4"	(13.51m)
Reach depth	36' 7"	(11.15m)
Unfolding height	12' 10"	(3.91m)

4-Section Boom		
1st section articulation	96°	
2nd section articulation	188°	
3rd section articulation	260°	
4th section articulation	246°	
1st section length	17' 11"	(5.46m)
2nd section length	11' 8"	(3.56m)
3rd section length	11' 8"	(3.56m)
4th section length	11' 8"	(3.56m)

General Specs		
Pipeline size (ID) metric ends	5"	(125mm)
Rotation	365°	
End hose — length**	10'	(3.00m)
End hose — diameter	5"	(125mm)
Outrigger spread L - R — front manually pull out & hydraulically extend down	11' 2"	(3.40m)
Outrigger spread L - R — rear hydraulically extend down	8' 6"	(2.59m)

Pump Specifications			
	20Z.09	20Z.12L	
Output — rod side	117 yd ³ /hr (90m ³ /hr)	142 yd ³ /hr (109m ³ /hr)	
piston side	78 yd ³ /hr (60m ³ /hr)	85 yd ³ /hr (65m ³ /hr)	
Pressure — rod side	1015 psi (70 bar)	1015 psi (70 bar)	
piston side	1537 psi (106 bar) •	1624 psi (112 bar) •	
Material cylinder diameter	8" (200mm)	9" (230mm)	
Stroke length	55" (1400mm)	83" (2100mm)	
Max strokes per minute — rod side	36	21	
piston side	25	13	
Volume control	0-Full	0-Full	
Vibrator	Standard	Standard	
Hard-chromed material cylinders	Standard	Standard	
Hydraulic system	Free Flow	Free Flow	
Hydraulic system pressure	5075 psi (350 bar)	5075 psi (350 bar)	
Differential cylinder diameter	4.3" (110mm)	5.1" (130mm)	
Rod diameter	2.5" (63mm)	3.1" (80mm)	
Maximum size aggregate	2.5" (63mm)	2.5" (63mm)	
Water tank	172 gal (650L)	172 gal (650L)	

Maximum theoretical values listed.
* Applies to units mounted on PMA stock truck — GMC TT8500
• Standard delivery line system rated at max line pressure of 1233 psi (85 bar)
** Please follow the end hose weight guidelines listed in the operators manual.

Putzmeister BOOM PUMP ADVANTAGE



A Perfect Fit

Maneuverable enough for urban areas and powerful enough to handle a variety of civil and residential applications, the 20Z-Meter is an affordable fit for your fleet. It is ideal whether you are just starting out or adding more flexibility to models you already own.



Better Boom Design

Robust and more resilient, Putzmeister's "smart design" boom incorporates welding seams below the edge of maximum stress. The boom is engineered to offer the flexibility to adapt to different loads and features more straight pipe for a less stressful concrete flow and longer wear on parts. The Z-Fold configuration handles space restrictive areas and can pump even if the boom is not fully extended.



Convenience and Control

The Frequency Hopping system on the standard HBC proportional radio remote ensures minimal interference with other frequency transmitters. Radiomatic Power Boost further enhances reception quality with a 50-100% increase in signal power. A fully proportional cable remote is also standard. Unlike other remote control systems, the radio and cable remote systems are completely independent, offering redundancies to ensure complete proportional operation with either the radio or cable remote in the event of a problem.

20Z-Meter

Truck-Mounted Concrete Boom Pump Standard Features

Boom

- 63' 10" (19.46m) vertical reach
- Low unfolding height
- Versatile 4-section Z-Fold boom
- Manual lubrication
- Integrated work lights

Delivery Line

- Equipped with 5" (125mm) twin-pipe delivery line on all boom sections providing efficient concrete delivery
- ESSER 500 twin-pipe deck pipe with 900 turret elbow
- PM back end kit with swivel elbow
- Easy lift-out brackets for simple delivery line replacement
- Standardized elbows and straight pipe sections
- Common component availability and easy replacement

Concrete Pump

- Choose from high pressure or high volume with the same setup
- Free flow hydraulic system for smooth, controllable pumping
- Multi-piece piston cup design
- Automatic lubrication of the concrete pistons for long service life
- Hard-chromed material cylinders
- Redundant proximity sensor system with function indicators
- Fully adjustable volume control for very slow pumping with full concrete pressure and boom speed
- Modular pump control box

Boom Operation and Control

- Fully proportional HBC radio remote
- Smooth and precise boom positioning at greater distances
- Fully proportional cable remote with 130' (40m) cable
- Gauge Port Central (GPC)
- Modular Boom Controls (MBC)
- 24V electrical system

Pedestal

- Rotation bearing and access openings simplify turret pipe changes
- Fully integrated pedestal design absorbs all forces
- Access opening simplifies changing turret pipe
- Easy access large single-suction filter with indicator gauge
- Condensation trap in the hydraulic tank for water collection
- Two spacious decks for convenient pipe and hose storage
- Manual lubrication
- Side-mounted aluminum toolboxes
- Integrated work lights
- Breakaway rear steps

Outriggers

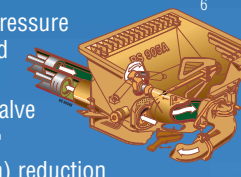
- Quick setup on restrictive job sites
- Fully hydraulic outriggers with integral cylinders
- Front outriggers manually pull out and hydraulically extend down
- Rear outriggers hydraulically extend down
- Four outrigger pads in two side compartments
- Bubble level indicators

Clean Out

- Fast and easy clean out
- 406 psi (28 bar) hydraulically-driven water pump
- Wash out kit and hose
- Integrated 172 gallon (650L) water tank

S-Valve

- Ideal for high pressure applications and harsh mixes
- Hard-faced S-Valve
- Gradual 9" to 7" (230 to 180mm) reduction
- Thick-walled valve construction
- Lasting wear over years of use



EZ Clean Out RS 905A Hopper

- Large 19.4 cu ft (550L) capacity
- Hard-faced remixer paddles
- Vibrator
- Hinged splash guard covers hopper during transit
- Low hopper height allows easy discharge from a mixer truck
- Automatic lubrication
- Integrated work lights

Putzmeister PRO-VANTAGE[®] WARRANTY PLAN

The PRO-VANTAGE[®] Warranty Plan extends the coverage on all Putzmeister BSF boom pumps for a total of 36 months or 6,600 hours at no extra charge.

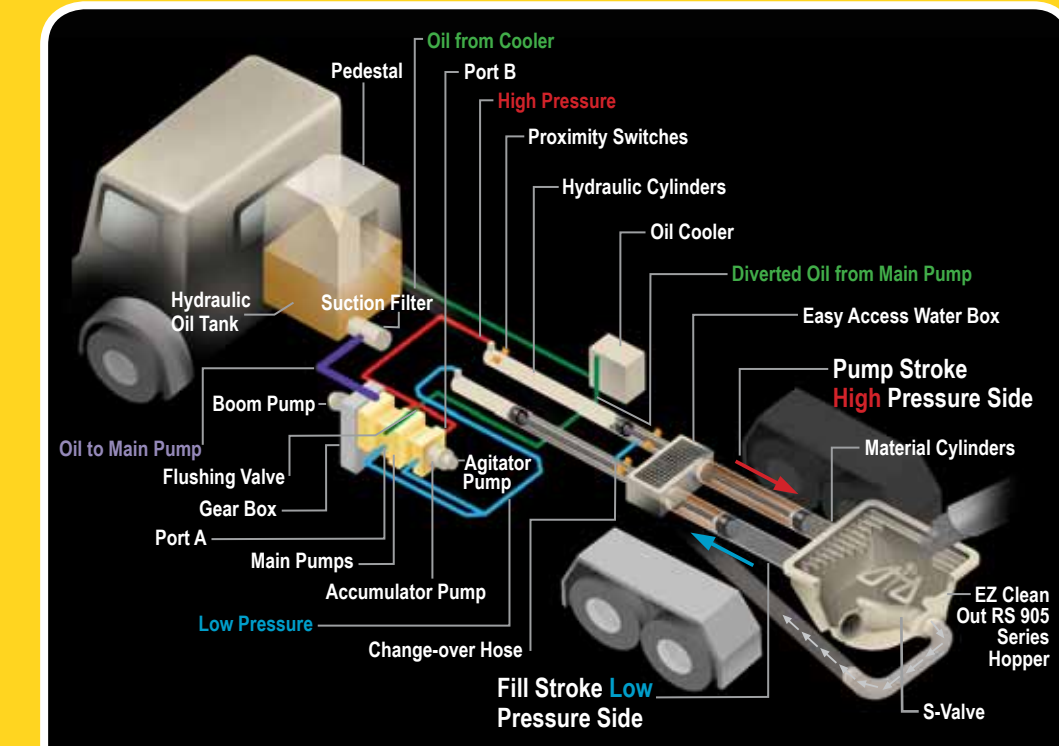


Unmatched Versatility in a Compact Design

Offering a compact design on its standard GMC chassis, the 20Z-Meter is ideal for busy urban job sites. It offers both the lowest unfolding height at 12' 10" (3.91m) and smallest front outrigger spread at 11' 2" (3.40m) of any truck-mounted boom pump on the market today.

A four-section Z-Fold boom design provides exceptional maneuverability to negotiate over and around obstacles for efficient concrete placement in hard-to-reach or highly congested areas. In addition, this versatile model may be equipped with either an .09 or .12L pump cell.

Putzmeister FREE FLOW HYDRAULICS



Putzmeister Free Flow Hydraulics in a Closed Loop System

The pumps at the heart of Putzmeister's free flow pumping system are bi-directional, variable displacement piston pumps. Depending on stroke, oil flows in a closed loop from either port A or port B on the pump to the hydraulic cylinders.

Depending on the specific pump cell size, up to 20% of the oil leaves the simple closed loop system during each stroke through a flushing valve on the main pump and cycles to a cooler before it returns to the hydraulic oil tank. Removing and cooling only this minimal amount of oil is possible because, unlike an open loop system, the oil flows freely without passing through any unnecessary valves that can generate heat.

The closed loop also requires far less oil to run the system, as a larger reservoir is not necessary to cool all of the oil.

Speed and timing are also critical to superior performance. Quicker and more responsive than a hydraulic signal, the electrical system on a Putzmeister pump minimizes the time it takes to change direction at stroke end.

An electrical signal precisely synchronizes the drive cylinders with the accumulator system that controls the S-Valve in the hopper. Reserved energy stored in a nitrogen bladder is sent as a supercharged blast of oil at precisely the right moment to facilitate a smooth and fast shift of the S-Valve from one position to another.

Key Advantages of Putzmeister's Free Flow Hydraulics:

- Changes in material pressure in the delivery line are reduced to ensure smooth pumping and a consistent concrete flow.
- There is greater pump output due to the efficient use of all available energy.
- The intelligent design minimizes wear-inducing pressure peaks, increases service life and makes our pumps extremely powerful.
- Rapid changeover of the stroke means higher outputs, a smoother flow of concrete and less boom bounce.